

Partners

Coordinator:

Robert Koch-Institut, RKI
Berlin, Germany

ROBERT KOCH INSTITUT



Co-Coordinator:

National Institute for Infectious
Diseases "L. Spallanzani", INMI
Rome, Italy



Associated Partners:

RKI, Germany
INMI, Italy
AGES, Austria
CODA-CERVA, Belgium
NCIPD, Bulgaria
HZJZ, Croatia
SUJCHBO, Czech Republic
DTU, Denmark
TA, Estonia
THL, Finland
INSERM, France
DGA, France
BwIM, Germany
FLI, Germany
UMR, Germany
BNITM, Germany
AUT, Greece

NCE, Hungary
ISS, Italy
IZSLER, Italy
NVSPL, Lithuania
RIVM, Netherlands
NIPH, Norway
NVI, Norway
NIPH-NIH, Poland
NVRI, Poland
INSA, Portugal
INC, Romania
Slovenia BIOEF, Spain
ISC III, Spain
FoHM, Sweden
PHE, United Kingdom
Erasmus MC, Netherlands

Collaborating Partners:

IZSPB, Italy
NKUA, Greece
SPIEZ, Switzerland
FOI, Sweden

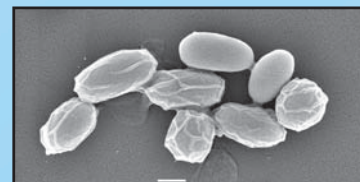


General Objectives

- ❖ The Joint Action (JA) EMERGE aims to ensure efficient response to serious emergent and re-emergent cross-border events by reinforcing the existing EU network of BSL 3 and BSL 4 laboratories which are already active in the field of identification of dangerous bacterial and viral human pathogens.
- ❖ The JA EMERGE comprises a European network of about 40 diagnostic laboratories focused on risk group 3 and 4 bacteria and viruses.
- ❖ The JA contributes to provide an integrated European laboratory infrastructure and strategy to protect European citizens against exposure to a panel of globally recognized high threat bacteria and viruses.



Filovirus
(Ebola virus)



Bacillus anthracis
spores

Specific Objectives

- ❖ **Networking of networks** for laboratory response establishing and strengthening the cooperation between networks
- ❖ **Improving** capabilities for **rapid** laboratory **diagnosis** of new or emerging pathogens (e.g. sample sharing)
- ❖ **Quality Assurance** for laboratory diagnostics by External Quality Assurance Exercises (**EQAE**)
- ❖ **Training** on diagnostics and **biorisk management**
- ❖ All activities are planned for a **direct laboratory response** in relevant outbreak situations and for improvement of **laboratory preparedness** in inter-epidemic phases



Expected Outcomes

- ❖ Production of agreed protocols or guidelines for outbreak management by interaction with other relevant networks and institutions to avoid duplications and strengthen the interoperability
- ❖ Increase of diagnostic capabilities for high threat pathogens and for diagnostics in outbreak situations
- ❖ A wet-lab will exercise the developed results in situations of cross-border outbreaks
- ❖ Assessment of status quo and recommendations for improvement of laboratory capabilities and quality for diagnosis of highly pathogenic agents
- ❖ Validation and improvement of biorisk management
- ❖ Implementation of rules for the maintenance, further development, and usage of the existing repositories of reference materials
- ❖ Training for improvement of the European capability to detect highly pathogenic agents



EMERGE is an EU funded Joint Action (JA), CHAFEA n° 677 066, coordinated by the Robert Koch-Institut (RKI), Germany, and co-coordinated by the National Institute for Infectious Diseases "L. Spallanzani" (INMI), Italy. It is carried out in close cooperation with 33 Associated Partners and 4 Collaborating Partners from 25 European countries.

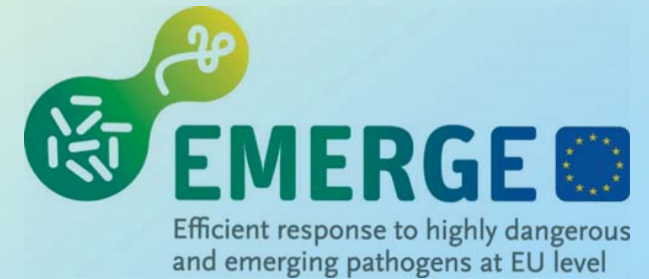
This Joint Action started in June 2015 and is running for 36 months.

Contact:

Roland Grunow
Robert Koch-Institut / ZBS 2
Seestr. 10
D-13353 Berlin
Tel.: +49-30-18754-2100
GrunowR@rki.de

Disclaimer:

This publication has been produced with the support of the European Commission's Consumers, Health, Agriculture and Food Executive Agency (CHAFEA). Its content is the sole responsibility of Robert Koch-Institut, Centre for Biological Threats and Special Pathogens, and can in no way be taken to reflect the views of the CHAFEA or any other body of the European Union.



**Efficient response to
highly dangerous and
emerging pathogens
at EU level**

**EMERGE
2015 - 2018**

<http://www.emerge.rki.eu>



Co-funded by
the Health Programme
of the European Union